

ALDH1L2 Antibody (C-term)
Affinity Purified Rabbit Polyclonal Antibody (Pab)
Catalog # AP11288b**Specification**

ALDH1L2 Antibody (C-term) - Product Information

Application	WB, IHC-P,E
Primary Accession	Q3SY69
Other Accession	Q8K009 , Q6GNL7 , NP_001029345.1
Reactivity	Mouse, Rat
Predicted	Xenopus
Host	Rabbit
Clonality	Polyclonal
Isotype	Rabbit IgG
Antigen Region	743-772

ALDH1L2 Antibody (C-term) - Additional Information**Gene ID** 160428**Other Names**

Mitochondrial 10-formyltetrahydrofolate dehydrogenase, Mitochondrial 10-FTHFDH, mtFDH, Aldehyde dehydrogenase family 1 member L2, ALDH1L2

Target/Specificity

This ALDH1L2 antibody is generated from rabbits immunized with a KLH conjugated synthetic peptide between 743-772 amino acids from the C-terminal region of human ALDH1L2.

Dilution

WB~~1:2000

IHC-P~~1:50~100

E~~Use at an assay dependent concentration.

Format

Purified polyclonal antibody supplied in PBS with 0.09% (W/V) sodium azide. This antibody is purified through a protein A column, followed by peptide affinity purification.

Storage

Maintain refrigerated at 2-8°C for up to 2 weeks. For long term storage store at -20°C in small aliquots to prevent freeze-thaw cycles.

Precautions

ALDH1L2 Antibody (C-term) is for research use only and not for use in diagnostic or therapeutic procedures.

ALDH1L2 Antibody (C-term) - Protein Information**Name** ALDH1L2 {ECO:0000303|PubMed:21238436, ECO:0000312|HGNC:HGNC:26777}

Function Mitochondrial 10-formyltetrahydrofolate dehydrogenase that catalyzes the NADP(+)-dependent conversion of 10-formyltetrahydrofolate to tetrahydrofolate and carbon dioxide.

Cellular Location
Mitochondrion.

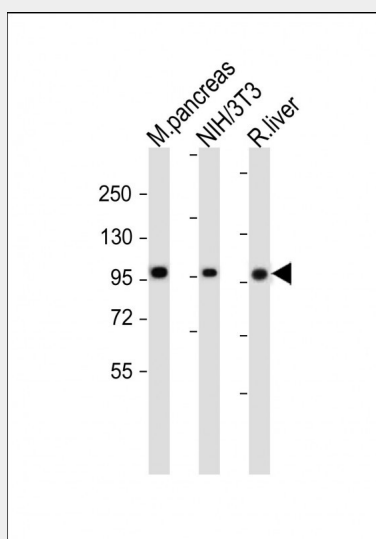
Tissue Location
Highly expressed in pancreas, heart, brain and skeletal muscle.

ALDH1L2 Antibody (C-term) - Protocols

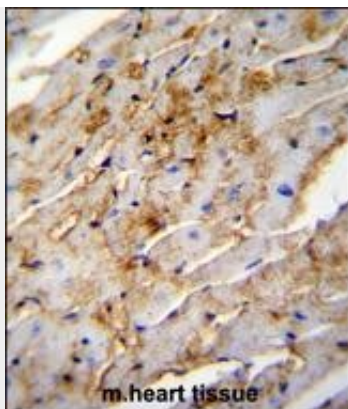
Provided below are standard protocols that you may find useful for product applications.

- [Western Blot](#)
- [Blocking Peptides](#)
- [Dot Blot](#)
- [Immunohistochemistry](#)
- [Immunofluorescence](#)
- [Immunoprecipitation](#)
- [Flow Cytometry](#)
- [Cell Culture](#)

ALDH1L2 Antibody (C-term) - Images



All lanes : Anti-ALDH1L2 Antibody (C-term) at 1:2000 dilution Lane 1: Mouse pancreas whole cell lysate Lane 2: NIH/3T3 whole cell lysate Lane 3: Rat liver whole lysate Lysates/proteins at 20 µg per lane. Secondary Goat Anti-Rabbit IgG, (H+L), Peroxidase conjugated at 1/10000 dilution. Predicted band size : 102 kDa Blocking/Dilution buffer: 5% NFDM/TBST.



ALDH1L2 Antibody (C-term) (Cat. #AP11288b) immunohistochemistry analysis in formalin fixed and paraffin embedded mouse heart tissue followed by peroxidase conjugation of the secondary antibody and DAB staining. This data demonstrates the use of ALDH1L2 Antibody (C-term) for immunohistochemistry. Clinical relevance has not been evaluated.